

MITF Antibody (N-term)
Affinity Purified Rabbit Polyclonal Antibody (Pab)
Catalog # AP11559a**Specification**

MITF Antibody (N-term) - Product Information

Application	WB, IF, FC,E
Primary Accession	O75030
Other Accession	O08874 , NP_937802.1 , NP_001171896.1 , O88368
Reactivity	Human
Predicted	Mouse, Rat
Host	Rabbit
Clonality	Polyclonal
Isotype	Rabbit IgG
Calculated MW	58795
Antigen Region	1-28

MITF Antibody (N-term) - Additional Information**Gene ID** 4286**Other Names**

Microphthalmia-associated transcription factor, Class E basic helix-loop-helix protein 32, bHLHe32, MITF, BHLHE32

Target/Specificity

This MITF antibody is generated from rabbits immunized with a KLH conjugated synthetic peptide between 1-28 amino acids from the N-terminal region of human MITF.

DilutionWB~~1:2000
IF~~1:10~50
FC~~1:10~50
E~~Use at an assay dependent concentration.**Format**

Purified polyclonal antibody supplied in PBS with 0.09% (W/V) sodium azide. This antibody is purified through a protein A column, followed by peptide affinity purification.

Storage

Maintain refrigerated at 2-8°C for up to 2 weeks. For long term storage store at -20°C in small aliquots to prevent freeze-thaw cycles.

Precautions

MITF Antibody (N-term) is for research use only and not for use in diagnostic or therapeutic procedures.

MITF Antibody (N-term) - Protein Information

Name MITF {ECO:0000303|PubMed:8069297, ECO:0000312|HGNC:HGNC:7105}

Function Transcription factor that acts as a master regulator of melanocyte survival and differentiation as well as melanosome biogenesis (PubMed:[10587587](#), PubMed:[22647378](#), PubMed:[27889061](#), PubMed:[9647758](#)). Binds to M-boxes (5'-TCATGTG-3') and symmetrical DNA sequences (E-boxes) (5'-CACGTG-3') found in the promoter of pigmentation genes, such as tyrosinase (TYR) (PubMed:[10587587](#), PubMed:[22647378](#), PubMed:[27889061](#), PubMed:[9647758](#)). Involved in the cellular response to amino acid availability by acting downstream of MTOR: in the presence of nutrients, MITF phosphorylation by MTOR promotes its inactivation (PubMed:[36608670](#)). Upon starvation or lysosomal stress, inhibition of MTOR induces MITF dephosphorylation, resulting in transcription factor activity (PubMed:[36608670](#)). Plays an important role in melanocyte development by regulating the expression of tyrosinase (TYR) and tyrosinase-related protein 1 (TYRP1) (PubMed:[10587587](#), PubMed:[22647378](#), PubMed:[27889061](#), PubMed:[9647758](#)). Plays a critical role in the differentiation of various cell types, such as neural crest-derived melanocytes, mast cells, osteoclasts and optic cup-derived retinal pigment epithelium (PubMed:[10587587](#), PubMed:[22647378](#), PubMed:[27889061](#), PubMed:[9647758](#)).

Cellular Location

Nucleus. Cytoplasm. Lysosome membrane Note=When nutrients are present, recruited to the lysosomal membrane via association with GDP-bound RagC/RRAGC (or RagD/RRAGD): it is then phosphorylated by MTOR (PubMed:23401004, PubMed:36608670) Phosphorylation by MTOR promotes ubiquitination and degradation (PubMed:36608670). Conversely, inhibition of mTORC1, starvation and lysosomal disruption, promotes dephosphorylation and translocation to the nucleus (PubMed:36608670). Phosphorylation by MARK3/cTAK1 promotes association with 14-3-3/YWHA adapters and retention in the cytosol (PubMed:16822840).

Tissue Location

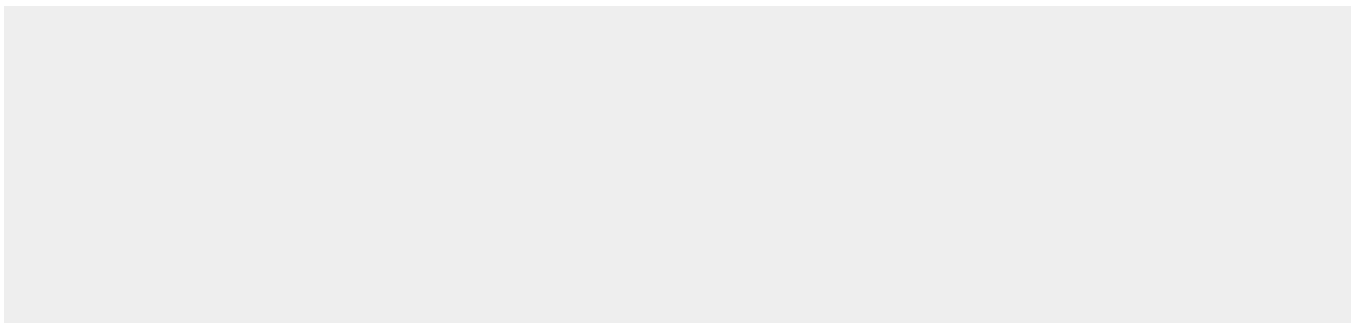
Expressed in melanocytes (at protein level). [Isoform C2]: Expressed in the kidney and retinal pigment epithelium. [Isoform H2]: Expressed in the kidney. [Isoform Mdel]: Expressed in melanocytes.

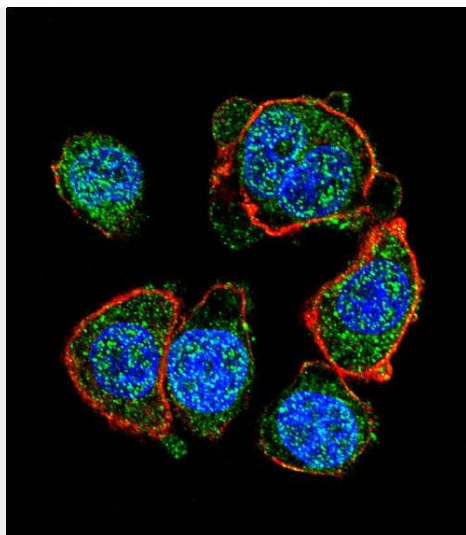
MITF Antibody (N-term) - Protocols

Provided below are standard protocols that you may find useful for product applications.

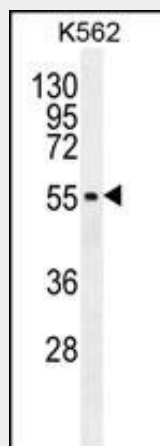
- [Western Blot](#)
- [Blocking Peptides](#)
- [Dot Blot](#)
- [Immunohistochemistry](#)
- [Immunofluorescence](#)
- [Immunoprecipitation](#)
- [Flow Cytometry](#)
- [Cell Culture](#)

MITF Antibody (N-term) - Images

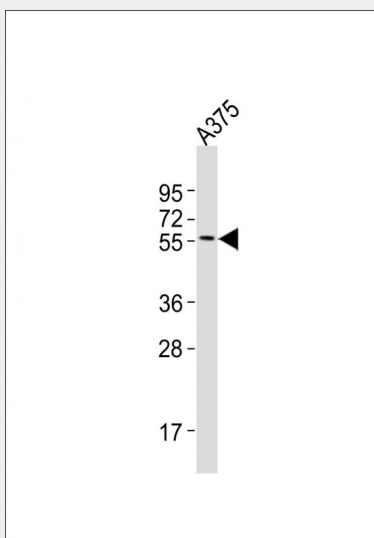




Confocal immunofluorescent analysis of MITF Antibody (N-term)(Cat#AP11559a) with hela cell followed by Alexa Fluor 488-conjugated goat anti-rabbit IgG (green). Actin filaments have been labeled with Alexa Fluor 555 phalloidin (red). DAPI was used to stain the cell nuclear (blue).

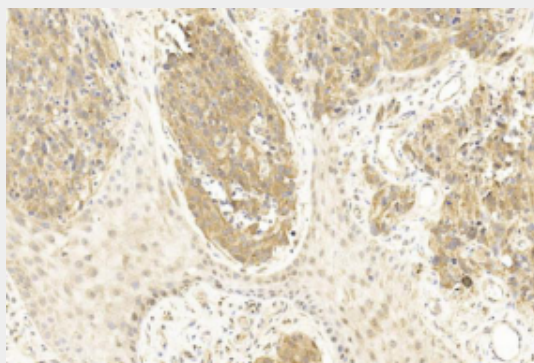


MITF Antibody (N-term) (Cat. #AP11559a) western blot analysis in K562 cell line lysates (35ug/lane). This demonstrates the MITF antibody detected the MITF protein (arrow).

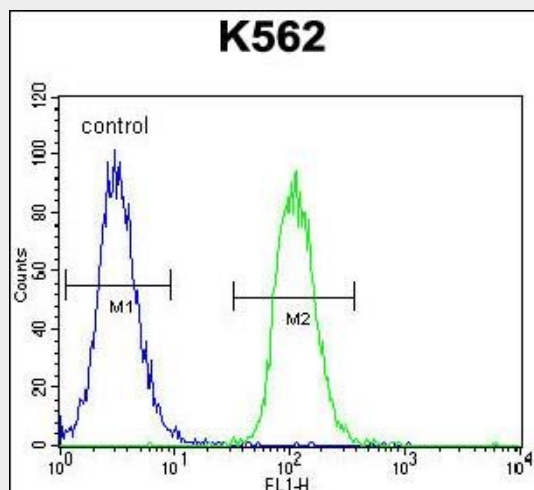


Anti-MITF Antibody (N-term) at 1:2000 dilution + A375 whole cell lysates Lysates/proteins at 20 µg

per lane. Secondary Goat Anti-Rabbit IgG, (H+L), Peroxidase conjugated at 1/10000 dilution
Predicted band size : 59 kDa Blocking/Dilution buffer: 5% NFDM/TBST.



Immunohistochemical analysis of paraffin-embedded Human Melanoma section using Pink1(Cat#AP11559A). AP11559A was diluted at 1:800 dilution. A undiluted biotinylated goat polyvalent antibody was used as the secondary, followed by DAB staining.



MITF Antibody (N-term) (Cat. #AP11559a) flow cytometric analysis of K562 cells (right histogram) compared to a negative control cell (left histogram). FITC-conjugated goat-anti-rabbit secondary antibodies were used for the analysis.

MITF Antibody (N-term) - Background

This gene encodes a transcription factor that contains both basic helix-loop-helix and leucine zipper structural features. It regulates the differentiation and development of melanocytes retinal pigment epithelium and is also responsible for pigment cell-specific transcription of the melanogenesis enzyme genes. Heterozygous mutations in the this gene cause auditory-pigmentary syndromes, such as Waardenburg syndrome type 2 and Tietz syndrome. Alternatively spliced transcript variants encoding different isoforms have been identified.

MITF Antibody (N-term) - References

Wang, Y., et al. BMC Med 8, 14 (2010) : Shiohara, M., et al. Int J Lab Hematol 31(2):215-226(2009)
Hershey, C.L., et al. Gene 347(1):73-82(2005) Miller, A.J., et al. J. Biol. Chem. 280(1):146-155(2005)
Shibahara, S., et al. J. Investig. Dermatol. Symp. Proc. 6(1):99-104(2001)

MITF Antibody (N-term) - Citations

- [Lactoferrin inhibits melanogenesis by down-regulating MITF in melanoma cells and normal melanocytes.](#)

